

# Where Nature Ends

FOR IMMEDIATE RELEASE

Juried and curated by Matthew Garrison

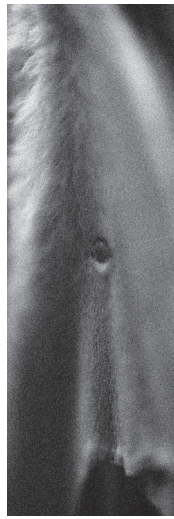
Alexis  
Duque



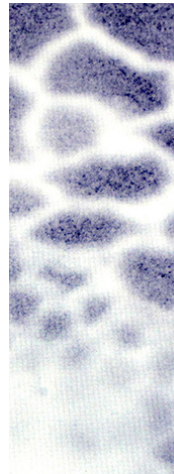
Ansel  
Oommen



An  
Debie



Maki  
Hajikano



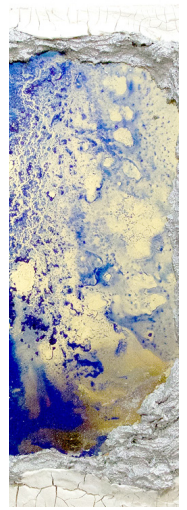
Rayer  
Ma



Andrea  
Evans



Younggi  
Han



The Cluster Gallery is pleased to present a group exhibition "*Where Nature Ends*", curated by artist and writer Matthew Garrison.

The exhibition, *Where Nature Ends*, presents the work of seven artists who, together, display layered investigations into the forces of nature by portraying the shifting lines between the natural landscape and industrialization as insistent forces in harmony and conflict. Concurrent with the potential of technology to preserve and devastate, is a steady increase of natural disasters such as floods, earthquakes and extreme temperatures, as reported by the United Nations. *Where Nature Ends* examines these forces through disparate materials and techniques by contrasting the overwhelming power of nature, with its potential for inherent beauty and transcendence.

*Where Nature Ends* stems, in part, from the ideas of Robert Smithson and the direct interventions of artists into the landscape in the 1970s, in conjunction with contemporary attitudes towards technology and scientific investigation. When Smithson located mirrors in sand, rocks and vegetation in his mirror displacement series, he created a boundary that intersected the terrain, a place where nature ends and, through its reflection, is replaced by a new perceptual experience. Smithson explains in an interview, "... it's not a return to nature; it's like a subsuming of physical properties, and then gathering them into some kind of coherence." The artists in *Where Nature Ends* approach their work from their unique perspectives, each isolating specific moments in nature and relating them to the human experience. Some have combined materials from the natural world with industrial substances, while others distill light in objects and flora through photography and science. Also, acknowledged in their work is the resolve of vegetation and wildlife to reassert itself into our structures and cities. The notion of "ending" in *Where Nature Ends* is a perceived threshold between human and natural realms, while, at the same time, confirming the subtlety and power intrinsic to nature.

The exhibition will open on **March 11th, and on view through April 1st, 2017**, with an opening for the public on **Saturday, March 11th, from 7 to 9 pm.**

The **Cluster** Gallery  
Brooklyn Art **Cluster**

200 6th Street, 3E Brooklyn, NY 11215  
[www.bklynartcluster.com](http://www.bklynartcluster.com) +1. 929.337. 8472