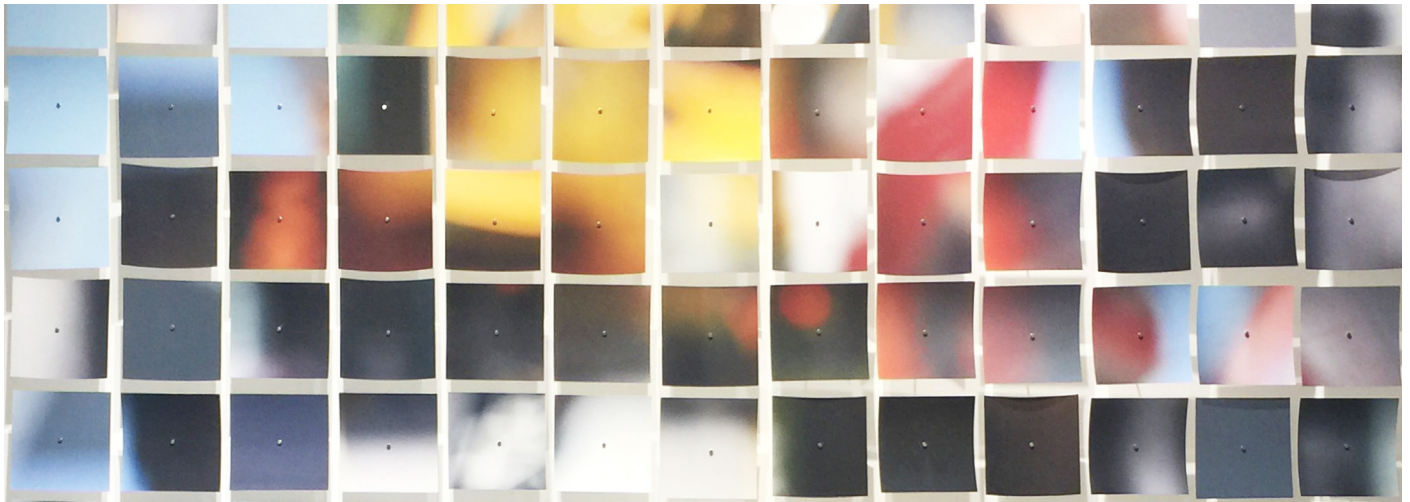


Kibeom Kwon, **Ambiguous Place**

August 17 – 27, 2017

Opening Reception: Thursday, August 17, 7-9pm

The Cluster Gallery, 200 6th Street, 3E, Brooklyn, NY 11215



The Cluster Gallery is pleased to announce **Ambiguous Place**, a solo show by Kibeom Kwon. The exhibition will be on view from August 17 through August 27, 2017, with a public opening reception on August 17, 7-9pm.

Ambiguous place is an experimental work representing scenes, spaces, and structures I experienced and remembered in the new form of photography. In this series, I present another way of representing underlying form through painterly expression and question, abandoning photographic specificity as record.

From the spring of 2010 to the fall of 2016 I visited New York City, Shanghai, London, Tokyo, Singapore, and other cities and documented intriguing colors, spaces, and architectural structures I found in those cities. These are creative images representing each city and replicas formed by modern Eastern and Western urban cultures. This project was executed through a process of selective gathering of such elements and my personal taste. In this process I explored my interest in the distinctive forms and impressive images of this age and posed questions concerning the most underlying form and import of all urban spaces.

As we often struggle over little things at the cost of larger objectives in our lives, I think that we may lose sight of the entire elemental form. As I tried to approach the true nature of form, shedding concrete images in balmuk (ink effects created by controlling the ink tonality and wetness of the brush), the blurred, ambiguous images I created were the results of my serious consideration of the true nature of elemental form representing the whole.

KWON, KIBEOM

Kibeom Kwon is a multidisciplinary artist living in Seoul and a professor of Dept. Oriental Painting, College of Art, Sungshin Woman's University in Seoul, South Korea. He received a BFA and MFA degree from Seoul National University in Seoul, South Korea. Kwon has shown at numerous galleries and exhibition venues in Korea, China, Russia, and North America.